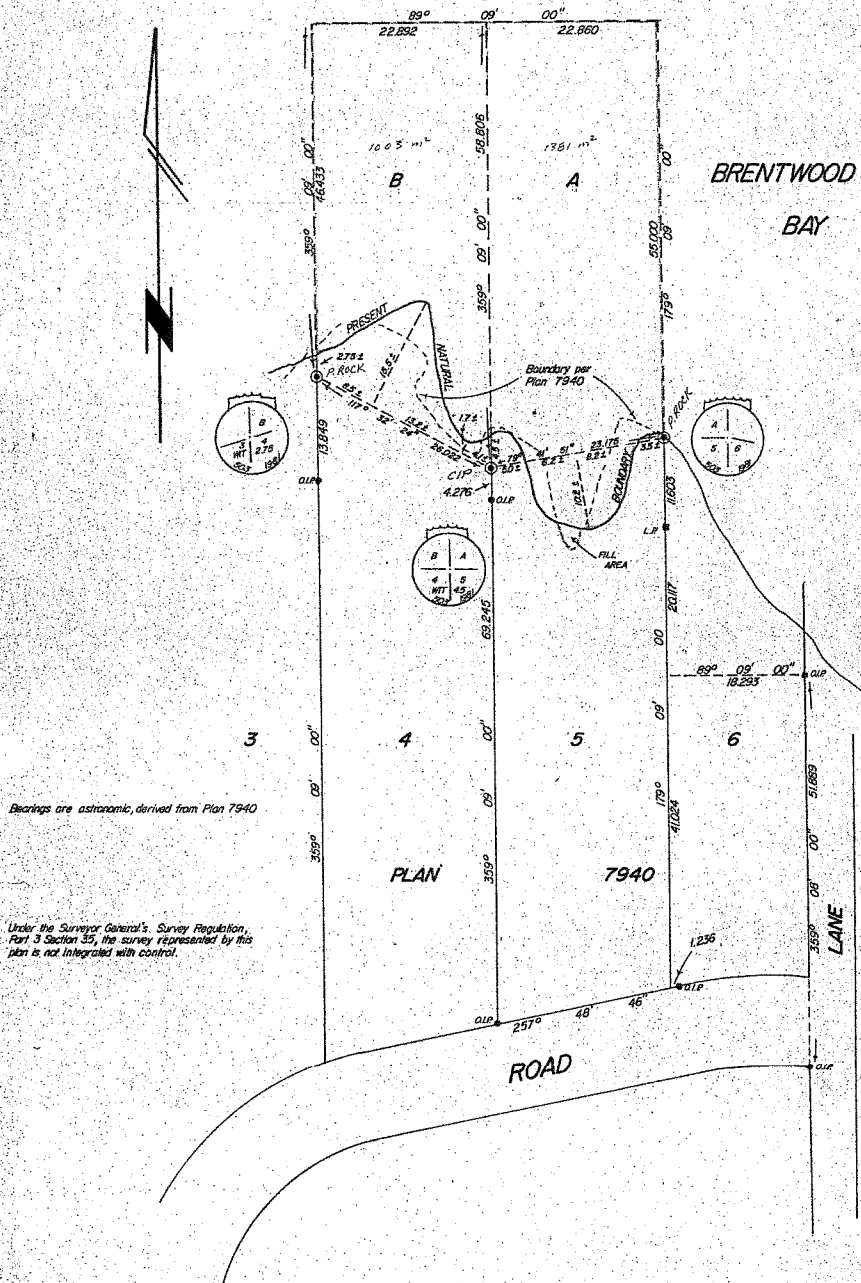


# SURVEY PLAN of BLOCKS A and B, of LOT 613, COWICHAN DISTRICT

Scale = 1:500



Bearings are astronomic, derived from Plan 7940

Under the Surveyor General's Survey Regulation, Part 3 Section 55, the survey represented by this plan is not integrated with control.

I, G.J. Anderson, a British Columbia Land Surveyor, of Victoria, in British Columbia, certify that I was present and personally supervised the survey represented by this plan and that the survey and plan are correct. The survey was completed on the 20<sup>TH</sup> day of OCTOBER, 1981

J.E. ANDERSON & ASSOCIATES  
B.C. Land Surveyors - Consulting Engineers  
Victoria & Nanaimo, B.C.  
File: 9137

*[Signature]*  
B.C.L.S.

E-A 131/B 0137