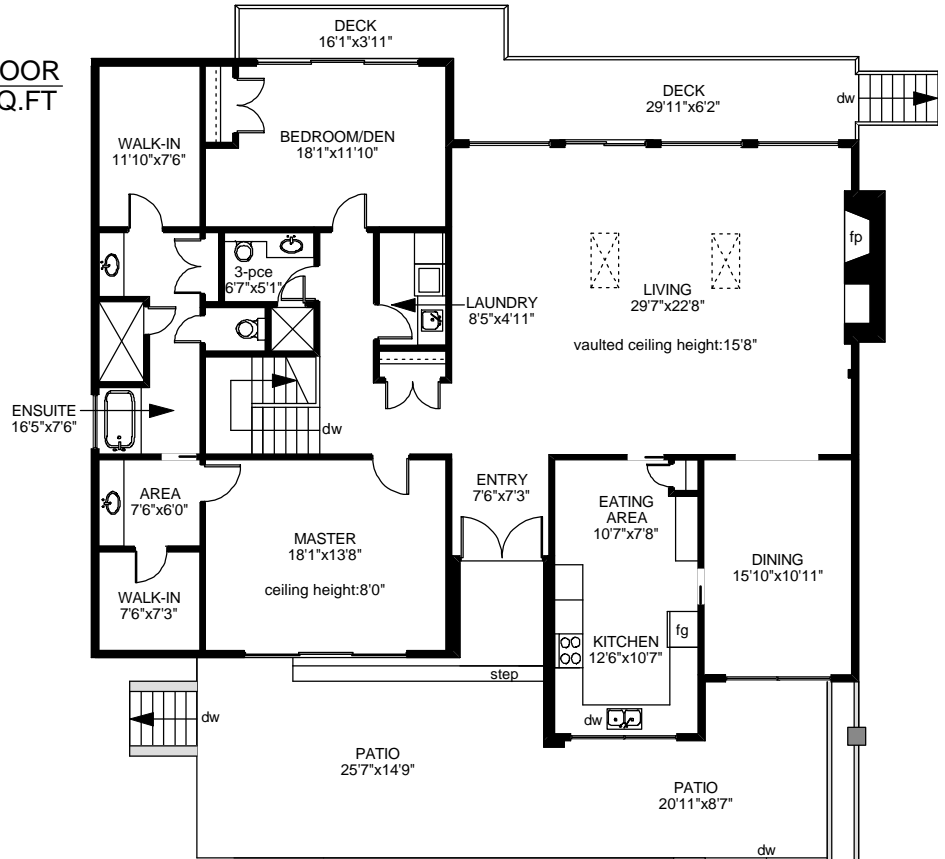


818 DELAMERE ROAD

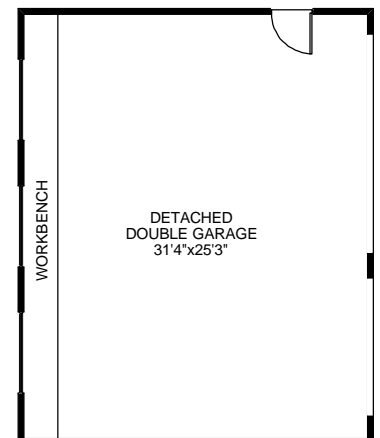
MAIN FLOOR
2398 SQ.FT



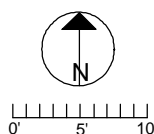
LOWER FLOOR
2398 SQ.FT



GARAGE
842 SQ.FT



	FINISHED SQ. FT.	UNFINISHED SQ. FT.	TOTAL SQ. FT.
MAIN	2398	0	2398
LOWER	2398	0	2398
TOTAL	4796	0	4796
GARAGE	0	842	842
DECK	0	262	262
PATIOS	0	1267	1267



PREPARED FOR THE EXCLUSIVE USE OF
BLAKE CLARK OF
SOTHEBY'S INTERNATIONAL REALTY CANADA

MEASURED ON: 06/24/10
DRAWING FILE: 08498

Tafemeasure VICTORIA, B.C.
Ph. 883.8894
www.tafemeasure.com