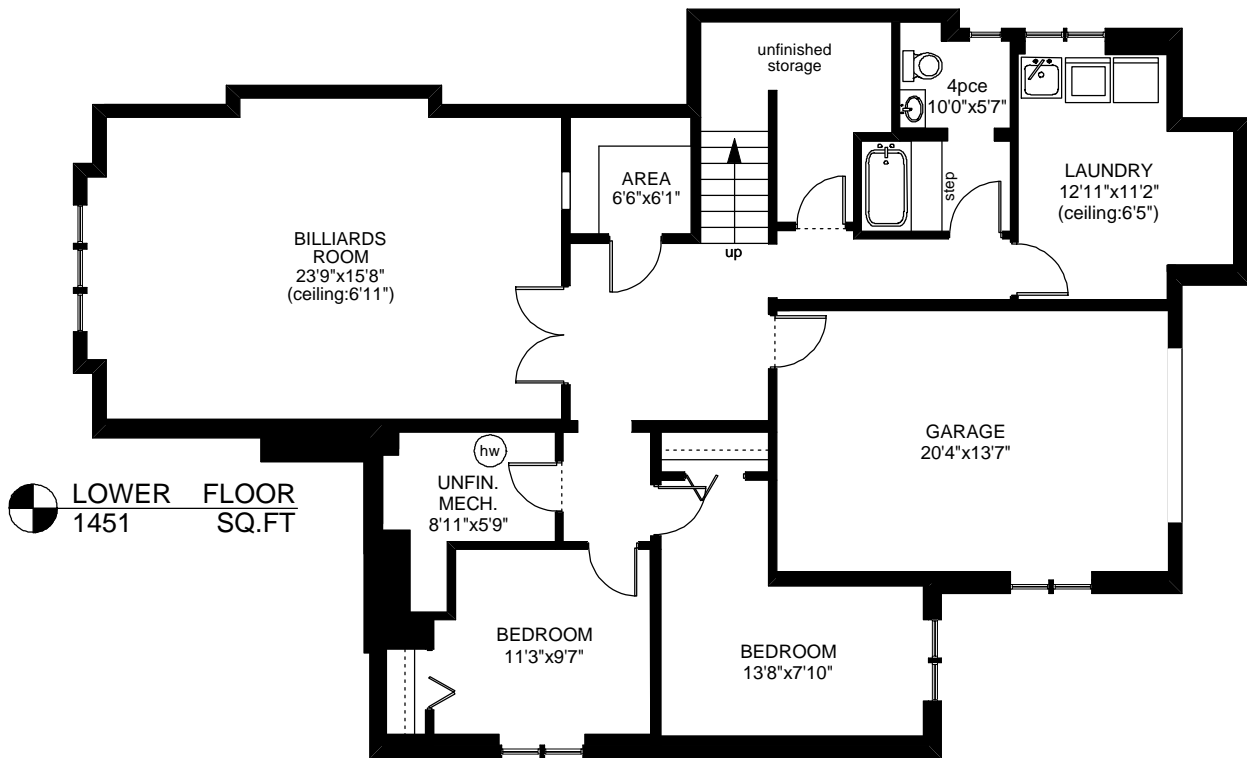
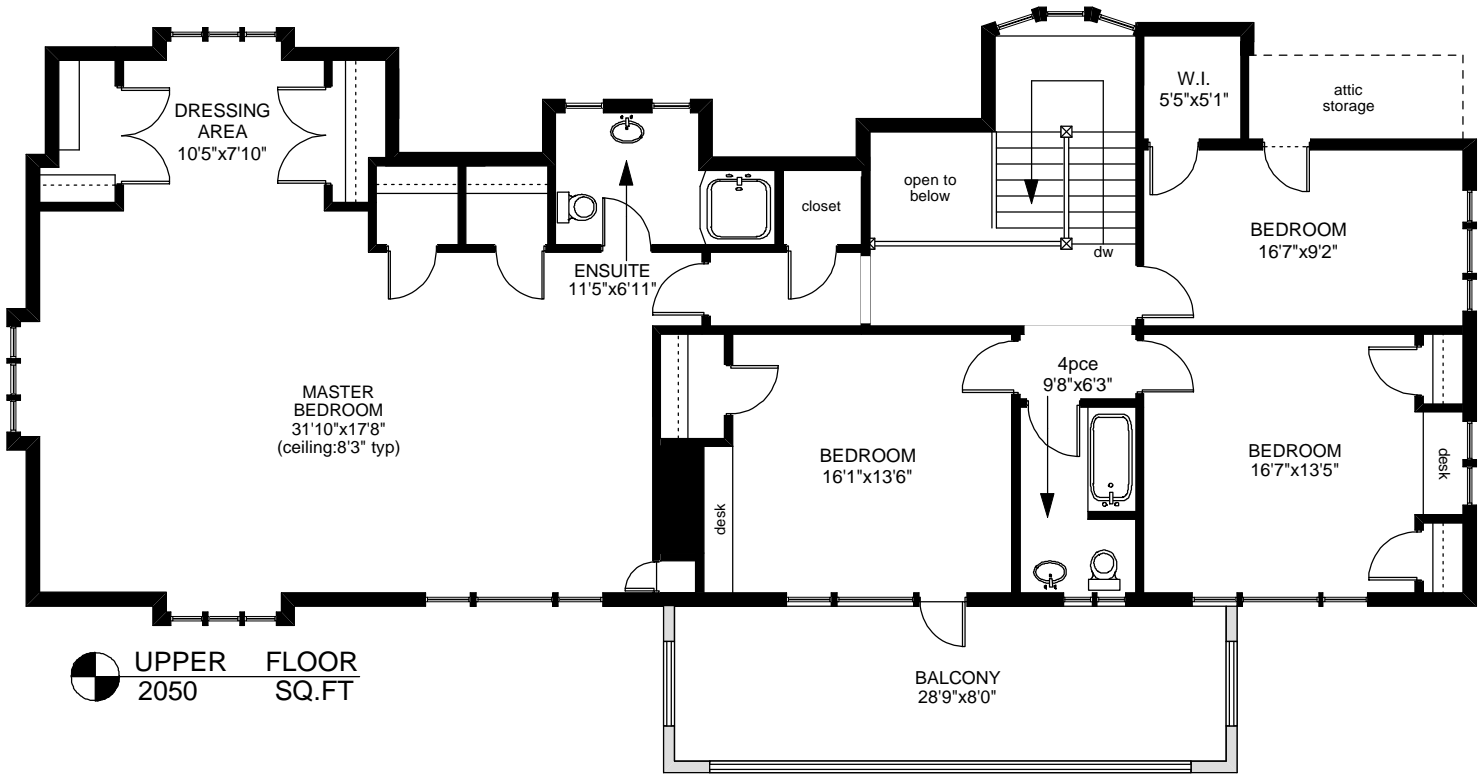
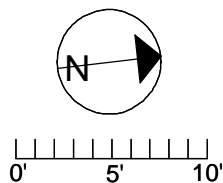


3605 CADBORO BAY ROAD



	FINISHED SQ. FT.	UNFINISHED SQ. FT.	TOTAL SQ. FT.
MAIN	2120	0	2120
UPPER	2050	0	2050
LOWER	1285	166	1451
TOTAL	5455	166	5621
GARAGE	0	314	314
PATIOS	0	442	442
BALCONY	0	232	232



PREPARED FOR THE EXCLUSIVE USE OF
SCOTT PIERCY & JAMES LeBLANC OF
SOTHEBY'S INTERNATIONAL REALTY CANADA.

MEASURED ON: 07/13/09
DRAWING FILE: 07407

Tafe Measure VICTORIA, B.C.
Ph. 883.8894
www.tafemeasure.com